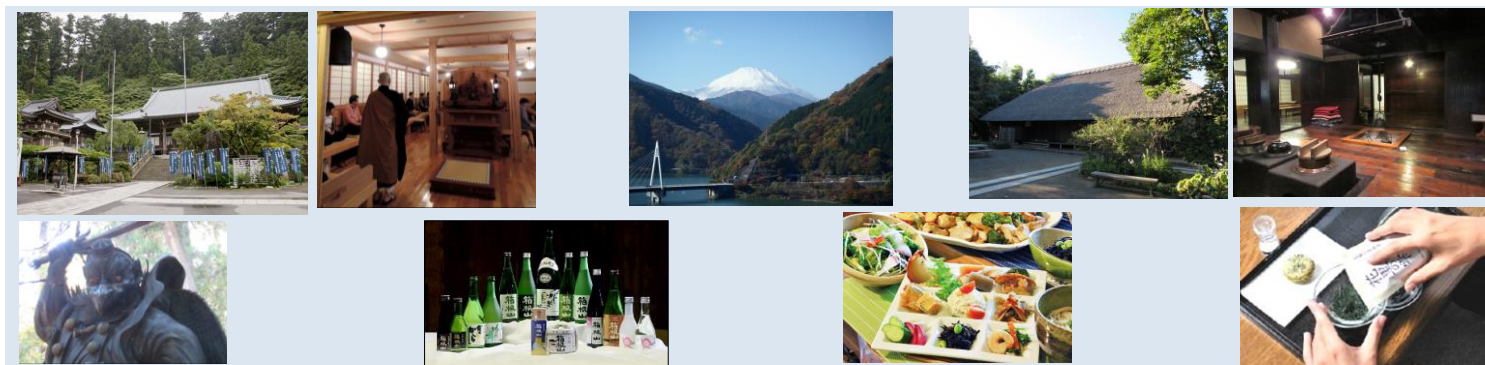


Kanagawa Prefecture Ashigara Area Tour "Autumn Foliage and Traditional Japanese Culture" on November 14 (Saturday), 2015



The International Hospitality and Conference Service Association (IHCSA) is pleased to announce the schedule for the Kanagawa Prefecture Ashigara Area Tour, introducing the autumn foliage viewing, history, culture, cuisine, and tourist attractions of the region. This tour, organized by IHCSA and sponsored by Kanagawa Prefecture, is for ambassadors and diplomats stationed in Tokyo and their families.



The first stop will be the Tanzawako-chiyonosawa-park observatory. The site has been designated one of the top 100 best places in the Kanto area to view Mount Fuji. You will enjoy a spectacular view of Lake Tanzawa and the surrounding mountains covered in brilliantly colored autumn foliage. If the weather is fine, you will also see Mount Fuji. Lunch will be at Only-You, a buffet-style natural-food restaurant serving a rich variety of seasonal dishes cooked Japanese-style. After lunch, you will visit Daiyuzan Saijo-ji Temple, founded in 1394. There you will experience Zen meditation and walk around the temple grounds, guided by a monk. The temple's approach path is lined with 500-year-old cedar trees and offers a view of lovely autumn hues. The next stop is Inoue Sake Brewery, established in 1789. Mr. Hiroshi Inoue, the seventh-generation owner of the brewery, will guide you through the brewery facilities, after which you will have a chance to taste some of their products. The final stop is an old private residence of a local personage. The residence is estimated to have been built in the first half of the 18th century. After visiting the thatch-roofed main building and the old water mill and well on the premises, you will enter a traditional Japanese storehouse for a tea-tasting event, where you will learn how different ways of brewing tea result in different tastes. This tour is designed to showcase some aspects of Japanese culture that are less frequently experienced by visitors from abroad, such as Zen meditation, sake production, and autumn foliage viewing. Take advantage of this unique opportunity and sign up now with your family and friends.

November 14 (Saturday)

7:30	Meet at North Gate of the Ministry of Foreign Affairs (MOFA)
7:45	Depart from MOFA by bus (09:00 Stop at Ebina Parking Area for rest)
	Welcome address by Mr. Noriaki Kugo, Secretary General, Ashigara Tourism Association
10:00	Tanzawako-chiyosawa-park observatory (You can see Tanzawa lake and Mt. Fuji)
	Note: In case of rain, visit around Tanzawa lake and *Hamasei Co., Ltd. instead of Tanzawako-chiyosawa-park Observatory (Hamasei produces taiyaki, a popular Japanese snack consisting of fish-shaped waffles filled with sweetened red bean paste.)
11:30	Lunch at Only-You (Buffet) Japanese cuisine
12:45	Daiyuzan Saijo-ji Temple (Zen meditation and take a stroll)
	Greeting by Minamiashigara City Mayor Mr. Shuhei Kato
14:50	Inoue Sake Brewery (Explanation of sake making and tasting)
	*Greeting by Oi Town Deputy Mayor Mr. Nakaharu Inoue
16:00	Seto old private residence (Inspection and Ashigara Japanese tea tasting)
	*Greeting by Nakai Town Mayor Mr. Yuichi Sugiyama, Matsuda Town Mayor Mr. Hiroyuki Motoyama, Kaisei Town Mayor Mr. Yuichi Fukawa and Yamakita Town Mayor Mr. Yuji Yukawa
	*Attendance of the mayors is subject to change without notice.
17:00	Depart from Ashigara region for MOFA (18:00 Stop at Ebina Parking Area for rest)
19:30	Arrive at MOFA (North Gate)

MAXIMUM NUMBER OF PARTICIPANTS: 30 persons

MINIMUM NUMBER OF PARTICIPANTS: 15 persons

PARTICIPATION FEE: 4,500-Yen

Fee includes cost of bus, lunch, admission, insurance, and taxes.

PAYMENT:

- The amount should be paid in Japanese yen into our bank account by **October 30 (Friday), 2015.**
- (Account information will be announced only on the confirmation letter.)
- Cancellation on or after **November 6** will incur a cancellation charge of **50%**; on or after **November 12** will incur a cancellation charge of **100%**.

ELIGIBLE PARTICIPANTS:

- Ambassadors, diplomats stationed in Tokyo and their families (Family members must be aged 12 years or older.)
- A maximum of four people can apply from each embassy.

REQUEST FOR COOPERATION:

- Participants will be asked to cooperate in a questionnaire, giving their impressions and opinions from the perspective of foreign tourists.
- There may be newspaper and TV coverage of the tour. Please cooperate if interviewed.
- Photographs of tour participants will be shown on the websites and newsletters of Kanagawa Prefecture and IHCSA.
- If possible, please write your comments about places visited on your blog and on the Trip Advisor review site.

REMARKS

- This tour will be conducted with English-Japanese interpretation by goodwill guides in the region.
- The itinerary is subject to change without notice.
- Parking is not available at MOFA. Please come to the meeting point by public transportation.
- Participants are requested to wear comfortable, casual clothing and shoes suitable for walking on a mountain path.

BOOKING: On a first-come first-served basis. Deadline: October 30 (Friday)

Please fill out the attached form and return it to us by

e-mail: shigeki.miki@ihcsa.or.jp or FAX: 03-3580-7451

INSURANCE

- Participants are insured for up to 10 million yen for death, 6000 yen per diem for hospitalization due to 4,000 yen per diem for medical treatment for injury.

CONTACT PERSON: Shigeki MIKI (Mr.)

PLACES TO BE VISITED

Daiyuzan Saijo-ji Temple <http://www.daiyuuzan.or.jp/> (Japanese)

Founded in 1394, the temple is linked to a legend that says that Doryo, a monk who helped found the temple, subsequently turned into a tengu and hid in the mountains. The tengu is a mythical creature with supernatural powers, and any unexplainable events that occur in the mountains are often attributed to this creature. The tengu is robed as a Buddhist priest and has a red face, an inordinately long nose, and a winged back. It carries a feather fan, a sword, and a pilgrim's staff, and wears tall wooden clogs, called geta. The temple grounds are filled with geta offered by worshippers. Because clogs are always used in pairs, they symbolize a happy marriage.



Big wooden clogs

Inoue Sake Brewery <http://www.hakoneyama.co.jp/> (Japanese)

The brewery was built in 1789 by Yoshichi Inoue. Originally a farmer, Yoshichi is said to have turned to sake brewing when he tripped on a rock shaped like a sake container on his way to the castle town of Odawara, where he hoped to get an idea for a new way of making a living. The rock is still kept by the Inoue family as a valuable heirloom.



Seto Old private residence http://www.town.kaisei.kanagawa.jp/forms/info/info.aspx?info_id=2448 (Japanese)

The main building contains a traditional kamado (wood-fueled cooking stove) and irori (sunken hearth for heating the home and cooking), and it is often used for local-cuisine cooking lessons and other events. In and around the main building is a network of old water channels that were used for domestic purposes.



INTERNATIONAL HOSPITALITY AND CONFERENCE SERVICE ASSOCIATION

TEL: 03-3580-0072

FAX: 03-3580-7451